



Input Solution



Carbon pill / ring Carbon ink

SC pill Best solution! Combines the advantages of LR and gold pills

Low Resistance (LR) pill (Expiring technology)

Description

- | | | |
|---|---|---|
| <ul style="list-style-type: none"> • Silicone based carbon pill • Ring is co-molded with keypad • Carbon ink is printed on the keypad • Contact resistance depends on contact force | <ul style="list-style-type: none"> • The best alternative to all low resistance solutions • SC-L for most applications (20mA) • SC-M for medium current application (300mA) • Co-molded with keypad | <ul style="list-style-type: none"> • Silicone based carbon pill • Ring is co-molded with keypad • Carbon ink is printed on the keypad • Contact resistance depends on contact force |
|---|---|---|

Advantages

- | | | |
|--|--|--|
| <ul style="list-style-type: none"> • High contact resistance • Standard product • High durability | <ul style="list-style-type: none"> • Very low contact resistance • Low force contact • Very robust against defects and/or dirt • Best price-performance ratio • High durability | <ul style="list-style-type: none"> • Low contact resistance • Low dirt resistance • High durability |
|--|--|--|

Applications

- Any contact technology

Key Tech. Data

Resistance [Ω]

Diameter [mm]

No. of cycles [#]

- | | | |
|--|--|---|
| <ul style="list-style-type: none"> • < 150 (\varnothing 2.5mm) • < 100 (\varnothing >2.5mm) | <ul style="list-style-type: none"> • < 1.5 (\varnothing 2.5mm) • < 1 (\varnothing >2.5mm) | <ul style="list-style-type: none"> • < 20 |
| <ul style="list-style-type: none"> • 2.5, 3.0, 3.5, 4.0, 5.0 | <ul style="list-style-type: none"> • 2.5, 3.0, 3.5, 4.0 | <ul style="list-style-type: none"> • 2.5, 3.0, 3.5, 4.0, 5.0 |
| <ul style="list-style-type: none"> • Approx. 500'000 | <ul style="list-style-type: none"> • Approx. 500'000 | <ul style="list-style-type: none"> • Approx. 500'000 |

Contacts

Europe:
America:
Asia:

Abatek International AG, Switzerland
Abatek (Americas), Inc., USA
Abatek (Asia) Co., Ltd., Thailand

saleseurope@abatek.com
salesamericas@abatek.com
salesasia@abatek.com

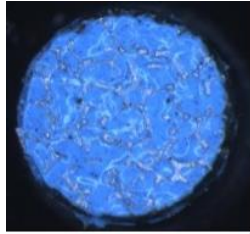
Phone: +41 44 843 11 11
Phone: +1 678 684 54 00
Phone: +66 2 729 9100

www.abatek.com

The best alternative to all low resistance solutions

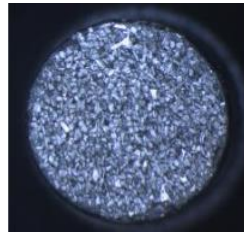


Input Solution



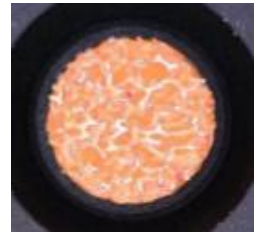
SC-L

Lower current



SC-M

Medium current



SC-H

High performance

Description

- SC-L for most applications (20mA)
- Co-molded with keypad
- Flat actuation
- In combination with ENIG PCB

- SC-M for medium current application (300mA)
- Co-molded with keypad
- Rotary & flat actuation
- In combination with ENIG PCB & Stamped terminals

- SC-H for medium current application (600mA)
- Co-molded with keypad
- Flat actuation
- In combination with SC-H PCB
- Enable **gold free PCBs** and **gold free contacts**

Advantages

- Very low contact resistance
- Low force contact
- Very robust against defects and/or dirt
- Best price-performance ratio
- High durability

Applications

- Any contact technology

Key Tech. Data

Resistance [Ω]

Diameter [mm]

No. of cycles [#]

Contact force [N]

- < 1.5 (\varnothing 2.5mm)
- < 1 (\varnothing >2.5mm)
- 2.5, 3.0, 3.5, 4.0
- Approx. 300'000
- >0.5N

- < 1.5 (\varnothing 2.5mm)
- < 1 (\varnothing >2.5mm)
- 2.5, 3.0, 3.5, 4.0
- Approx. 150'000
- >0.3N

- < 1.5 (\varnothing 2.5mm)
- < 1 (\varnothing >2.5mm)
- 3.0, 3.5, 4.0
- Approx. 300'000
- >0.5N

Contacts

Europe:
America:
Asia:

Abatek International AG, Switzerland
Abatek (Americas), Inc., USA
Abatek (Asia) Co., Ltd., Thailand

saleseurope@abatek.com
salesamericas@abatek.com
salesasia@abatek.com

Phone: +41 44 843 11 11
Phone: +1 678 684 54 00
Phone: +66 2 729 9100

www.abatek.com